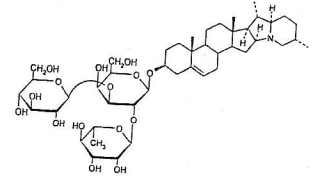




INDOFINE Chemical Company, Inc.

121 Stryker Lane, Building 30
Hillsborough, NJ 08844 USA
Phone: (908) 359-6778; Fax: (908) 359-1179



HPLC Lot No.: 14051406

α-SOLANINE 021652S

IDENTIFICATION

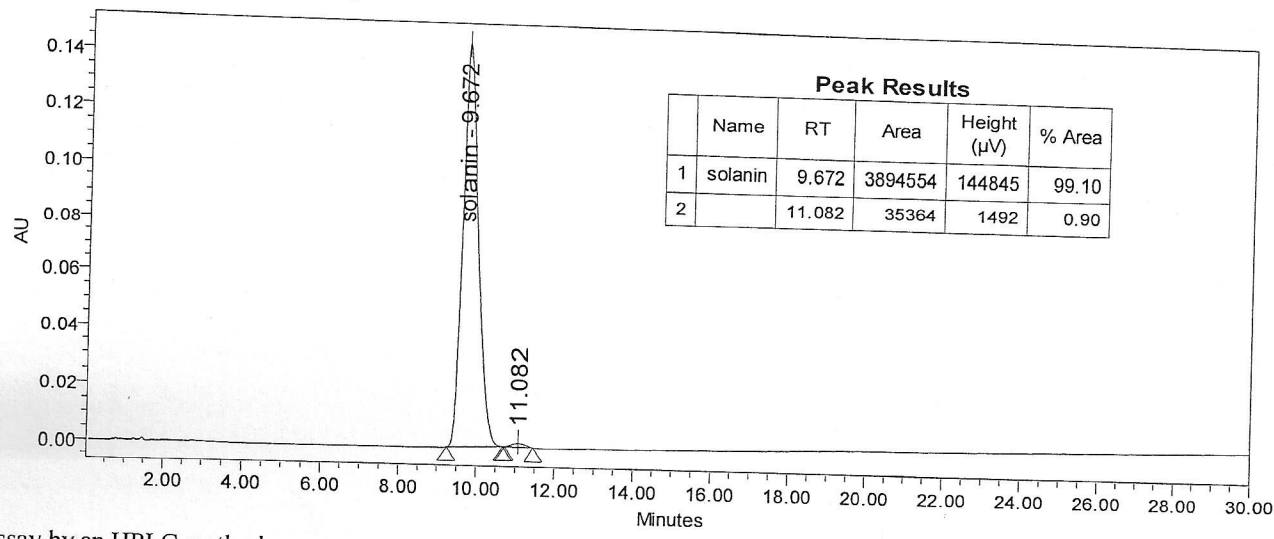
CAS number	[20562-02-1]
Synonym name	Solatunine
Chemical family	Alkaloids
Molecular formula	C ₄₅ H ₇₃ NO ₁₅
Molecular weight	868.08

CERTIFICATE OF ANALYSIS

Appearance	White powder
Moisture	2.0%
Residual solvent	0.8%
Thin layer chromatography	support: Silicagel solvent: Methylene chloride /methanol/NH ₄ OH 2% aq (55/45/5 ,V/V/V) detection: p-Anisaldehyde/acetic acid/sulfuric acid (1/40/1:V/V/V) then heating 10 mn at 110°C Draggendorf
N content	1.50 % N
Storage	TOXIC . Store in a dry and dark place. Place in a desiccator under vacuum before use

HIGH PERFORMANCE LIQUID CHROMATOGRAPHY

Column	Nova pak C18® (3.9 x 150 mm), particle size 4 μm
Solvent	Tampon 0.1M monobasic ammonium phosphate pH3.5 / Acetonitrile (75/25 ,V/V)
Flow rate	1 ml/min
Detector	UV visible 200 nm
Sample solvent	Mobile phase



Assay by an HPLC method.

Date of last QC-recheck: November 2013
Date of retest: November 2017

The values given on the 'Certificate of Analysis' are the results determined at the time of analysis.